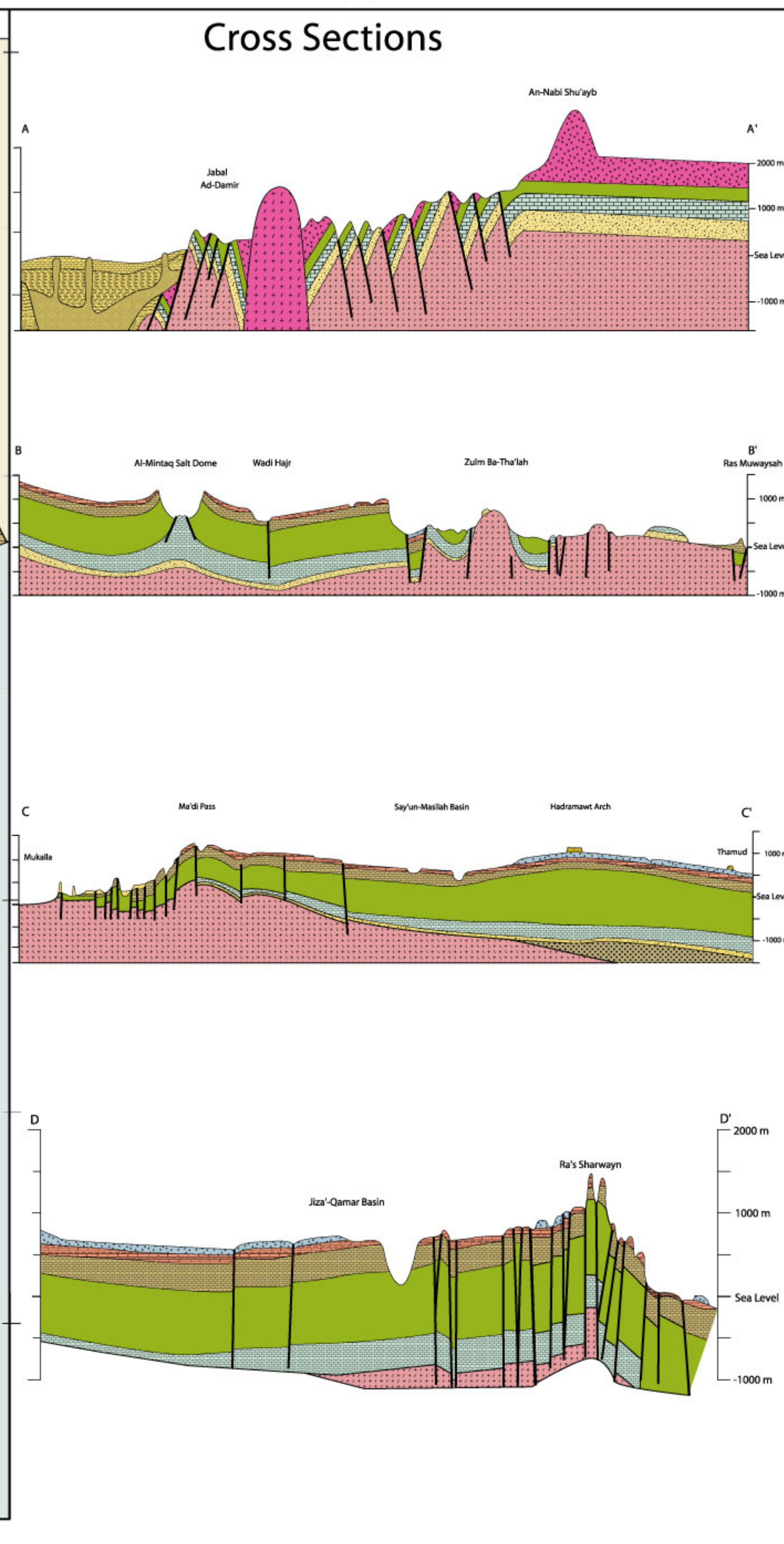
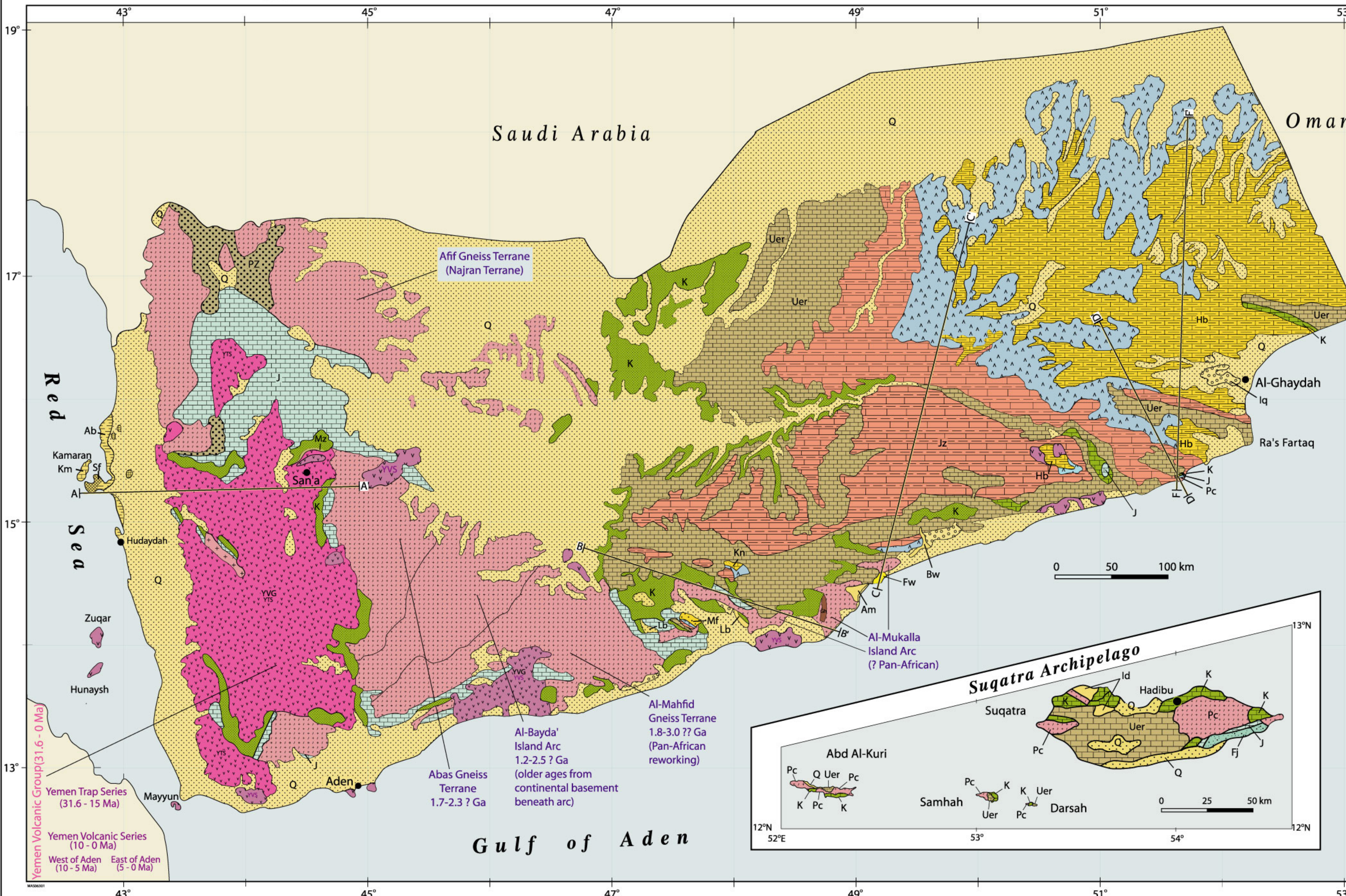




# GEOLOGICAL MAP OF YEMEN

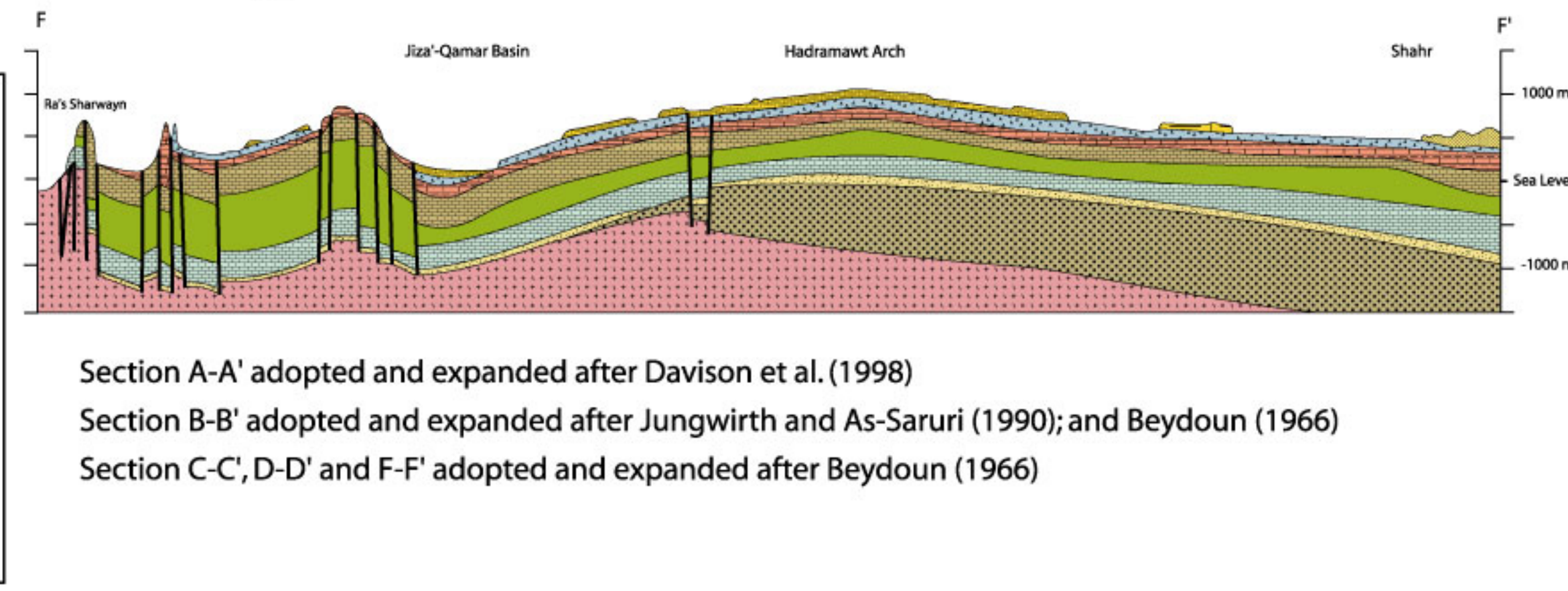


**LEGEND:**

<b>Q</b> Quaternary (undifferentiated)	<b>Id</b> 'Irdiq Formation (Upper Miocene / Pliocene)	<b>Mf</b> Mayfa'ah Formation (Middle Eocene)	<b>Mz</b> Majzir Formation (Upper Paleocene / Lower Eocene)	<b>Gh</b> InfraCambrian (Ghabar Group) (undifferentiated)
<b>YVG</b> Yemen Trap Series (Upper Oligocene/Lower Miocene)	<b>Fw</b> Fuwwah Formation (Lower / Middle Miocene)	<b>Kn</b> Kaninah Formation (Middle Eocene)	<b>K</b> Cretaceous (Tawilah Group) (undifferentiated)	<b>Pc</b> Precambrian (undifferentiated)
<b>YVS</b> Yemen Volcanic Series (Lower Miocene/Recent)	<b>Id</b> 'Idiyu Formation (Suqatra Island) (Middle Oligocene / Miocene)	<b>Hb</b> Habshiyah Formation (Middle Eocene)	<b>K</b> Cretaceous (Mahra Group) (undifferentiated)	
<b>Km</b> Kamaran Member (Pleistocene)	<b>Bw</b> Buwaysh Formation (Oligocene)	<b>Rs</b> Rus Formation (Lower Eocene)	<b>J</b> Jurassic (Amran Group) (undifferentiated)	
<b>Ab</b> Abbas Formation (Pliocene / Pleistocene)	<b>Am</b> Ambakhah Formation (Oligocene)	<b>Jz</b> Jiza' Formation (Lower Eocene)	<b>Fj</b> Falanj Formation (Suqatra Island) (Triassic)	
<b>Sf</b> Salif Formation (Lower / Upper Miocene)	<b>Lb</b> Libakhah Formation (Oligocene)	<b>Uer</b> Umm er Radhuma Formation (Upper Paleocene / Lower Eocene)	<b>Pz</b> Paleozoic (Wajid and Akbarah Fms.)	

**Cross Sections:**

- Sand Dunes
- Upper Oligocene/Pliocene (Shihri Group)
- Jurassic (Kuhlan Formation)



This geological map illustrates only the distribution of the geological units, mainly the groups and formations of the outcropping sedimentary succession (No detail division of the Jurassic and Cretaceous) and represents the formal lithostratigraphic nomenclature used in Yemen